

MITSUBISHI Nch POWER MOSFET

FS3KM-16A

HIGH-SPEED SWITCHING USE

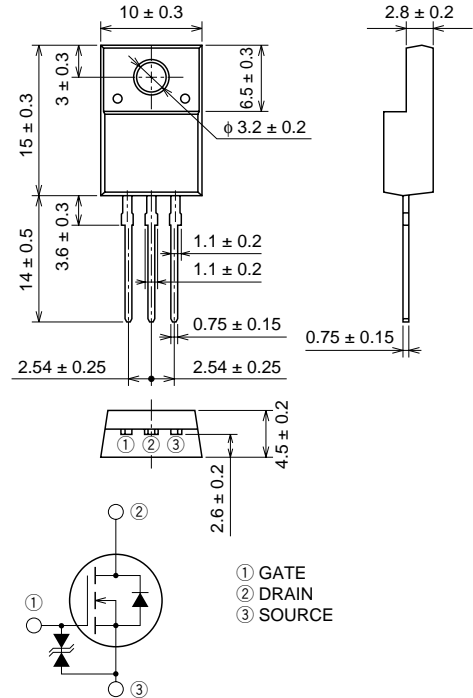
FS3KM-16A



- V_{DSS} 800V
- $r_{DS(ON)}$ (MAX) 3.3Ω
- I_D 3A
- V_{iso} 2000V

OUTLINE DRAWING

Dimensions in mm



TO-220FN

APPLICATION

SMPS, DC-DC Converter, battery charger, power supply of printer, copier, HDD, FDD, TV, VCR, personal computer etc.

MAXIMUM RATINGS (T_c = 25°C)

| Symbol | Parameter | Conditions | Ratings | Unit |
|-----------|---------------------------|-----------------------------------|------------|------------------|
| V_{DSS} | Drain-source voltage | $V_{GS} = 0V$ | 800 | V |
| V_{GSS} | Gate-source voltage | $V_{DS} = 0V$ | ± 30 | V |
| I_D | Drain current | | 3 | A |
| I_{DM} | Drain current (Pulsed) | | 9 | A |
| P_D | Maximum power dissipation | | 30 | W |
| T_{ch} | Channel temperature | | -55 ~ +150 | °C |
| T_{stg} | Storage temperature | | -55 ~ +150 | °C |
| V_{iso} | Isolation voltage | AC for 1 minute, Terminal to case | 2000 | V _{rms} |
| — | Weight | Typical value | 2 | g |